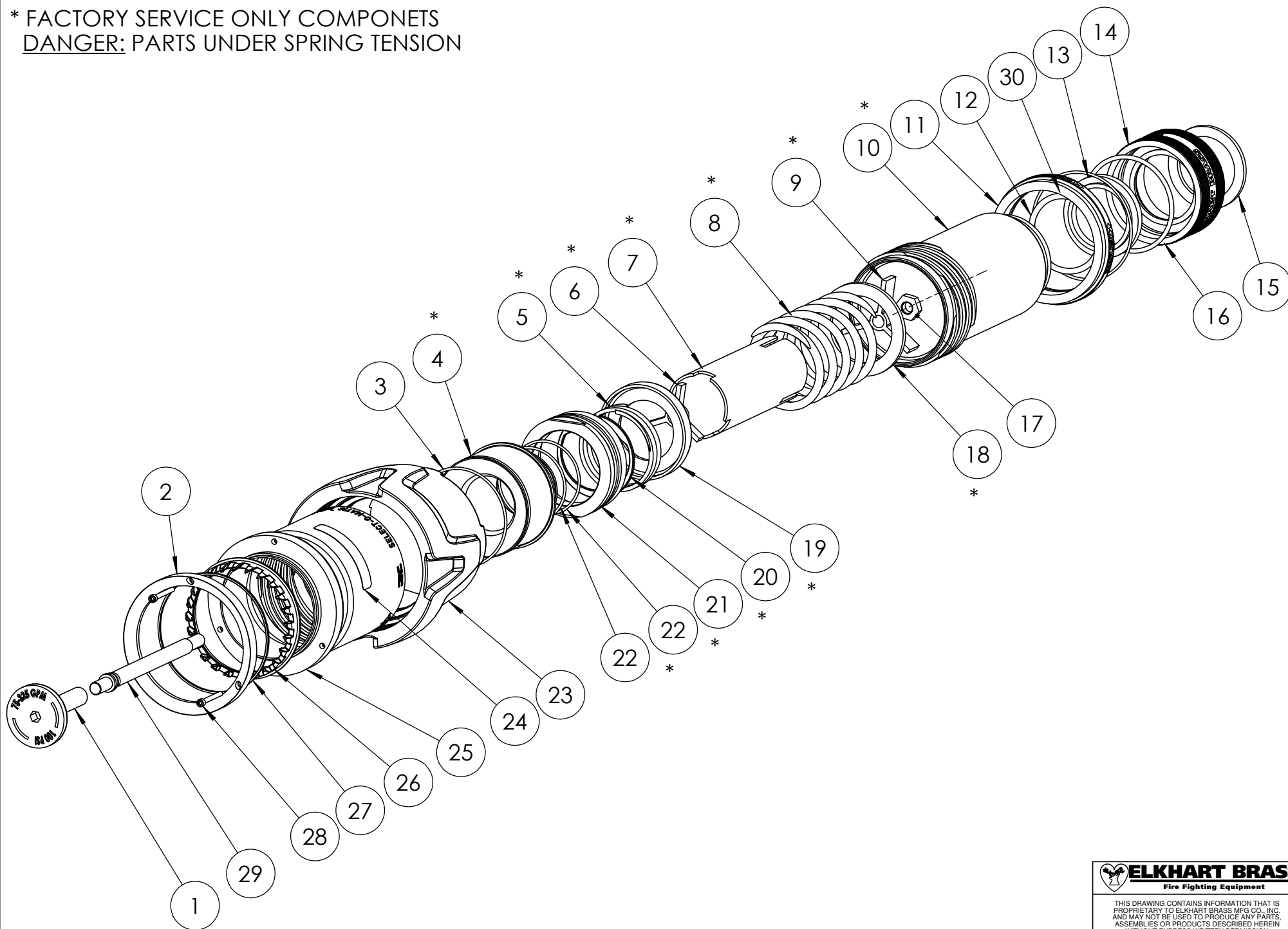



* FACTORY SERVICE ONLY COMPONENTS
 DANGER: PARTS UNDER SPRING TENSION



VISIT OUR WEBSITE FOR REPAIR VIDEOS
www.ElkhartBrass.com

 ELKHART BRASS Fire Fighting Equipment	
<small>THIS DRAWING CONTAINS INFORMATION THAT IS PROPRIETARY TO ELKHART BRASS MFG CO., INC. AND MAY NOT BE USED TO PRODUCE ANY PARTS, ASSEMBLIES OR PRODUCTS DESCRIBED HEREIN WITHOUT EXPRESS WRITTEN PERMISSION</small>	
SM XD HIGH TIP-EXPLODED (75-325@100) PAGE 1 OF 2	EXPLODED DRAWING

ITEM NO.	PART NUMBER	DESCRIPTION	Default/QTY.
1	69098007	STEM HEAD	1
2	57631007	RING - TOOTH RETAINER	1
3	57477000	O RING AS-568-036 2.364 X.070	1
4	17475007	BARREL-CENTER	1
5	61786000	SPRING - COIL	1
6	33712001	GUIDE-STEM	1
7	63891001	SLEEVE	1
8	61785000	SPRING-COIL	1
9	63380001	STEM BASE (WEB)	1
10	18286007	BODY-NOZZLE	1
11	59148007	RING-RETAINING SM HIGH	1
12	57309000	O RING AS-568-224 1.734 X.139	1
13	63863000	VALVE SEAT FOR 1.375 WW BALL	1
14	11391007	ADAPTER-INLET TIP SM XD HIGH	1
15	33074000	GASKET-RUBBER 2.062X1.562X.125TH	1
16	57324000	O RING AS-568-140 2.237 X.103	1
17	47709000	NUT HEX 0.312-24 NF SS	1
18	71115000	WASHER - REINF.	1
19	63578001	SPACER	1
20	57689000	RING - RETAINER	1
21	17146007	BODY-NOZZLE TIP	1
22	57430000	O RING AS-568-031 1.739 X.070	2
23	338830XX	GRIP - HAND (BUMPER)	1
24	44789000	LABEL- PRODUCT DATA	1
25	67342001	TIP - NOZZLE	1
26	58983001	RING - TEETH (SPINNING)	1
27	59193000	RING - TEETH WEAR	1
28	64070000	SCREW 4-40X1.000 SOC CAP SS	3
29	69099007	STEM-BASE	1
30	57474000	O RING AS-568-038 2.614 X.070	1

 **ELKHART BRASS**
Fire Fighting Equipment

THIS DRAWING CONTAINS INFORMATION THAT IS PROPRIETARY TO ELKHART BRASS MFG CO., INC. AND MAY NOT BE USED TO PRODUCE ANY PARTS, ASSEMBLIES OR PRODUCTS DESCRIBED HEREIN WITHOUT EXPRESS WRITTEN PERMISSION

SM XD HIGH TIP-EXPLODED PAGE 2 OF 2	EXPLODED DRAWING
--	---------------------